

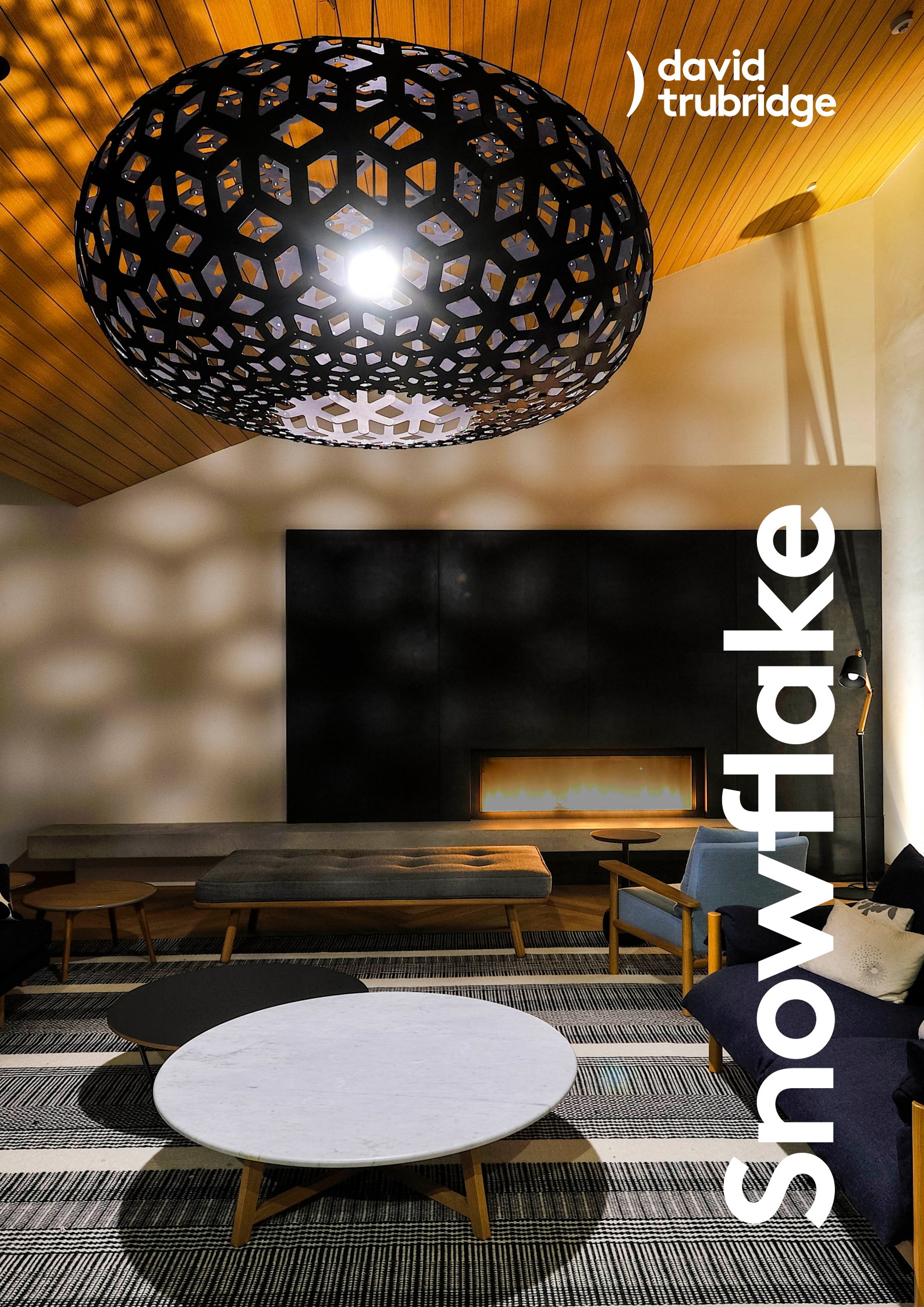


Architectural Lighting

lumen⁸

) david
trubridge

snowflake





Snowflake



Creates a repeating geometric hexagonal pattern based on a snowflake. The light was designed following a trip David made to Antarctica as a visiting artist. Snowflake comes in 3 sizes. The plywood finish can be all natural or painted on one side thus creating a stock selection of 11 options. Snowflake is assembled from a hexagonal snowflake shape which creates a repeating geometric pattern. The light was designed following a trip David made to Antarctica as a visiting artist. It builds on the process he first developed with Coral of using minimal thin sheet material in compound curvature to create.



Features

Shipped Kitset

Seed System kitset lightshades are on average 1/30th of the volume of the assembled light. This aims to help minimize the effects of shipping and to reduce the design's environmental footprint.

Compliance

CE

AS/NZS

(Declarations of conformity available on request).

Care Instructions

All wooden and/or polycarbonate lights are intended for use in dry interior conditions only and can be cleaned with a soft cloth dampened slightly in warm water when the light is switched off. Do not use detergents.

Light sizes

David Trubridge kitset lightshades come in various sizes, making it easy to find the right size to any interior space whether it's small or large.

EPD Certified

An EPD is a standardised and verified way of quantifying the environmental impacts of a product, based on a consistent set of rules that have been developed through a stakeholder consultation process.

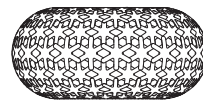
Warranty

This light is warranted for three years from date of purchase for failure of parts.



THE INTERNATIONAL EPD® SYSTEM

Technical Data



800mm/31"

1000mm/39"

1600mm/63"

			Dimensions
Width: 800mm / 31" Height: 400mm / 16" Weight: 1.7kg / 3.74lb			
2m / 6.5ft			
Bamboo plywood (Sourced from FSC accredited factory)			
Nylon			
1 x Suspension Wire			
470mm x 360mm x 80mm 19" x 14" x 3" 0.014m³ / 0.478ft³ 2.2kg / 4.85lb			
			Cordset*
Width: 1000mm / 39" Height: 500mm / 20" Weight: 2.5kg / 5.51lb			
2m / 6.5ft			
Bamboo plywood (Sourced from FSC accredited factory)			
Nylon			
1 x Suspension Wire			
530mm x 450mm x 80mm 21" x 18" x 3" 0.019m³ / 0.674ft³ 3.2kg / 7.05lb			
			Material
Width: 1600mm / 63" Height: 700mm / 28" Weight: 11.2kg / 24.69lb			
5m / 16.4ft			
Bamboo plywood (Sourced from FSC accredited factory)			
Aluminium			
3 x Suspension Wires			
1650mm x 1650mm x 850mm 65"x 65" x 33" 2.314m³ / 81.723ft³ 160kg / 352.74lb			
			Fasteners
			Suspension
			Packaging

*Black comes with black cordset and fasteners. All others come with white cordset and clear fasteners. Custom lengths available on request.

You will need

Fixings for cone gripper (fixing screws NOT SUPPLIED).

Note: Choose appropriate hardware to attach base plate (Fig.1) to ceiling substrate.

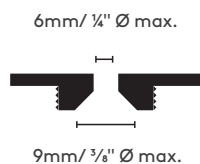
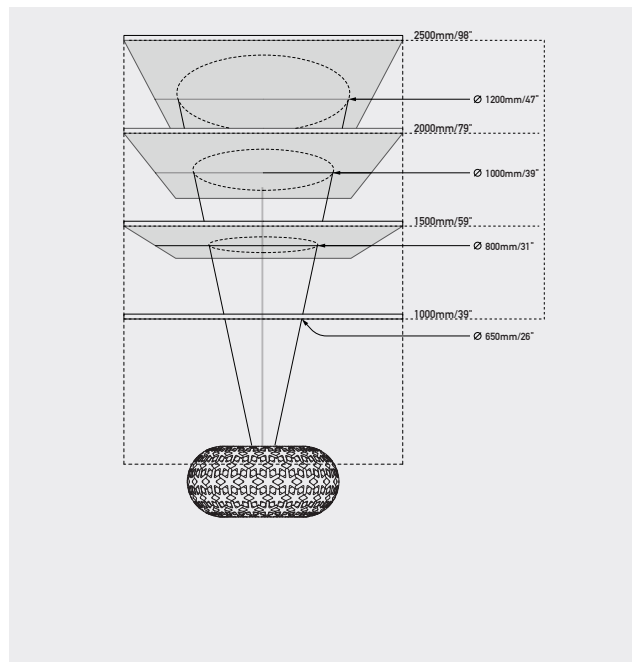


Fig 1. Base Plate

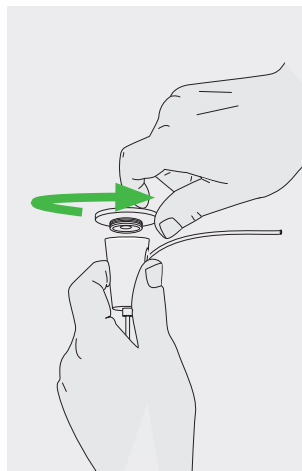
Installation 1600mm/63"



Step 1.

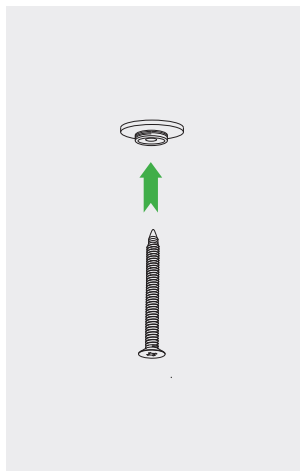
Decide upon hanging distance. Use the schematic diagram as a guide to pick a circle radius to be marked out on ceiling. This circle can be marked with a length of timber or string.

Installation - All sizes



Step 1.

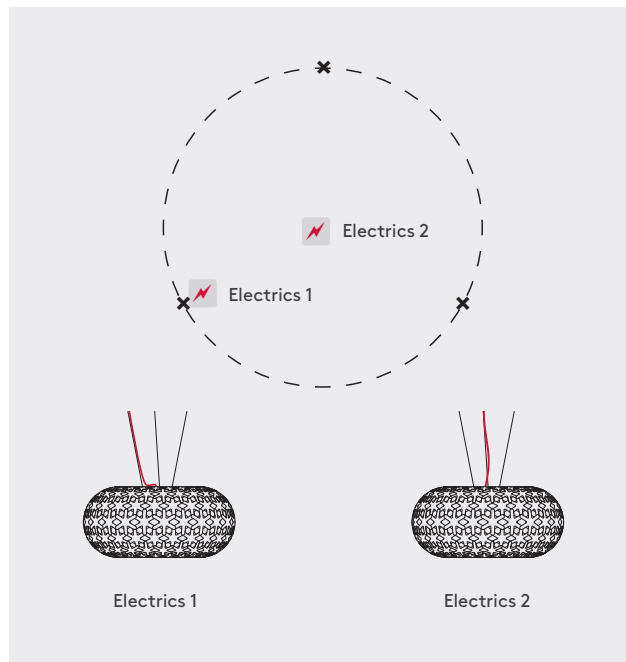
Unscrew baseplate.



Step 2.

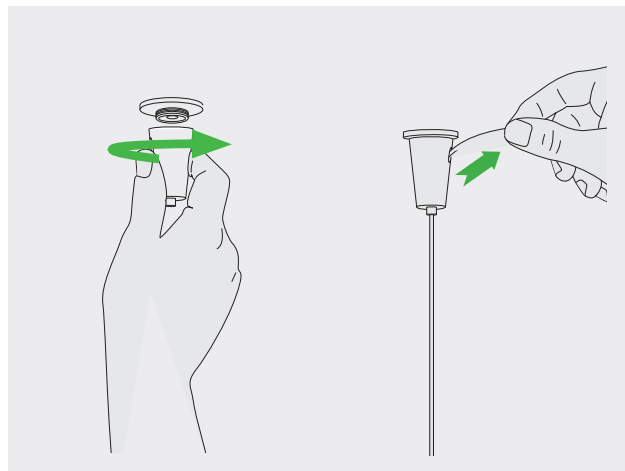
Use appropriate fixing screw to mount base plate (Fig.1).

Options



Step 2.

Mark 3 hanging points where your cone grippers will be located. You can either centrally locate the ceiling canopy or run the electric cord up one of the suspension wires.

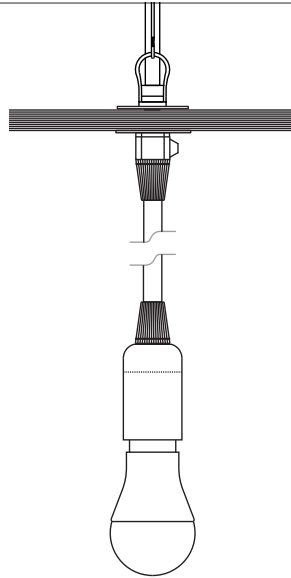


Step 3.

Remove cable from cone. Screw cone back onto baseplate. Re-insert cable and level light. Once desired position is set, trim excess cable.

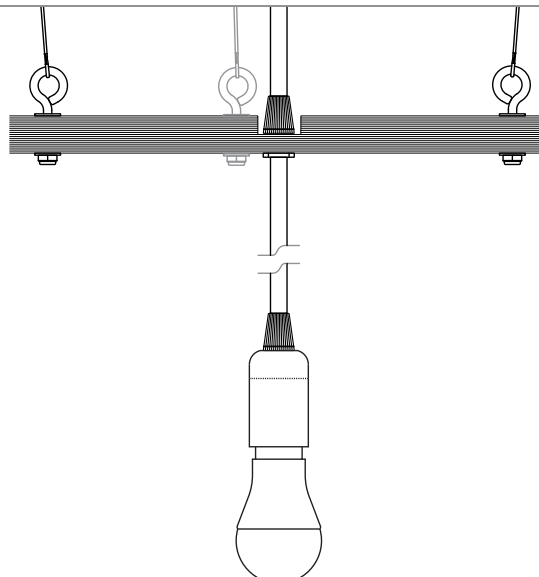
Diagrams

800mm/31"
1000mm/39"

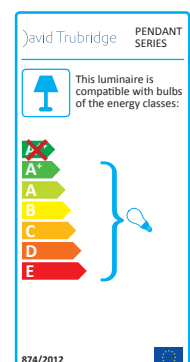


North America: E26, Max 60 Watts
120v AC 60hz
Rest of World: E27, Max 60 Watts
230-240v AC 50hz

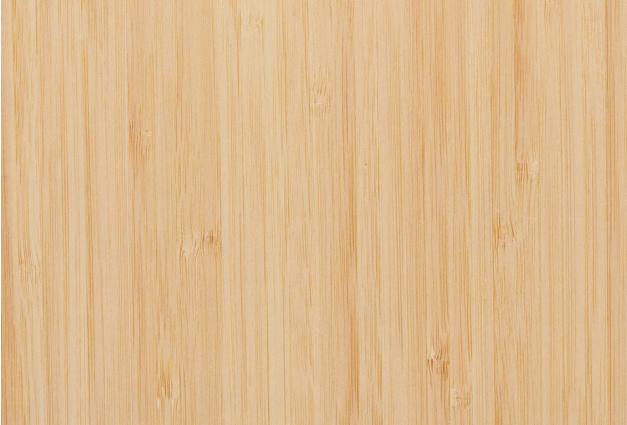
1600mm/63"



North America: E26, Max 60 Watts
120v AC 60hz
Rest of World: E27, Max 60 Watts
230-240v AC 50hz



Finish Choices



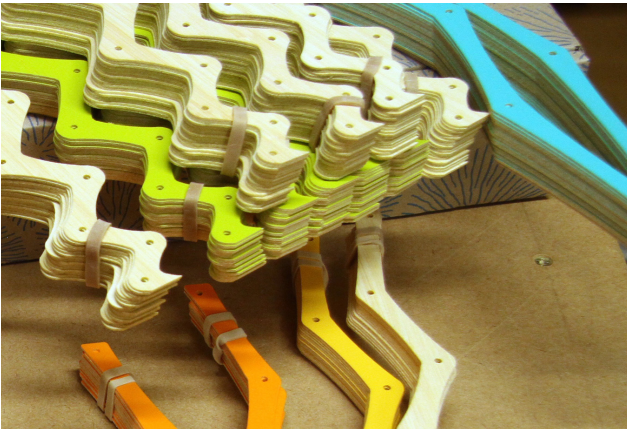
Natural

All bamboo (our primary material) is secondary product, from renewable forests in China grown as a food source. We have visited these plantations and are satisfied with the quality of their systems.



Caramel

Caramel bamboo starts out as natural and is carbonised using steam to caramelise the natural sugars which darken the bamboo. This process creates a different look without using chemicals.



Painted Lights

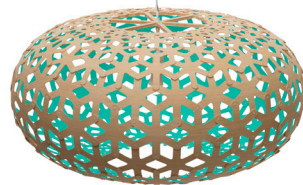
We use an acrylic low VOC (volatile organic compound) paint that is made in New Zealand. Colour swatches are available in all retailers. See the Resene website for more info. www.resene.co.nz



Natural



Caramel



Aqua



Lime



Red



Orange



Yellow



White 1 Side



White 2 Sides



Black 1 Side (Outside)



Black 1 Side (Inside)



Black 2 Sides





Contact

New Zealand
Showroom/Head office

Contact

+64 6 6500 204
info@davidtrubridge.com

Address

Corner Station Road &
Groome Place, Whakatu,
Hastings, Hawkes Bay,
New Zealand

+61 7 3254 4122
sales@lumen-8.com.au
lumen-8.com.au

38 Arthur Street
Fortitude Valley Q 4006

 @lumen8architecturallighting
 @lumen8architecturallighting
 @lumen8-architectural-lighting

lumen⁸
Architectural Lighting