



Architectural Lighting

lumen⁸

) david
trubridge

iki
por
cel
lin



Hīnaki



Based on fish traps which are called hīnaki by Māori. Hīnaki traps were made from woven vines, some in amazingly beautiful forms. Hīnaki was David's first exploration into lighting in 1995 when he made a prototype based on fish traps which are called hīnaki by Maori. Hīnaki traps were made from woven vines, some in amazingly beautiful forms.

Hīnaki comes in 3 sizes; 500mm tall, 900mm tall and 1400mm tall. The plywood finish can be all natural or painted creating a wide range of colour options.



Features

Shipped Kitset

Seed System kitset lightshades are on average 1/30th of the volume of the assembled light. This aims to help minimize the effects of shipping and to reduce the design's environmental footprint.

Compliance

CE

AS/NZS

(Declarations of conformity available on request).

Care Instructions

All wooden and/or polycarbonate lights are intended for use in dry interior conditions only and can be cleaned with a soft cloth dampened slightly in warm water when the light is switched off. Do not use detergents.

Light sizes

David Trubridge kitset lightshades come in various sizes, making it easy to find the right size to any interior space whether it's small or large.

EPD Certified

An EPD is a standardised and verified way of quantifying the environmental impacts of a product, based on a consistent set of rules that have been developed through a stakeholder consultation process.

Warranty

This light is warranted for three years from date of purchase for failure of parts.



THE INTERNATIONAL EPD® SYSTEM

Technical Data



500mm / 20"

900mm / 35"

1400mm / 55"

Dimensions	Cordset*	Material	Fasteners	Suspension	Packaging
Width: 170mm / 7" Height: 500mm / 20" Weight: 0.3kg / 0.66lb	2m / 6.5ft	Bamboo plywood (Sourced from FSC accredited factory)	Nylon	Hangs on cord	565mm x 185mm x 70mm 22" x 7" x 3" 0.007m³ / 0.3ft³ 0.9kg / 2lb
Width: 320mm / 13" Height: 900mm / 35" Weight: 0.7kg / 1.54lb	2m / 6.5ft	Bamboo plywood (Sourced from FSC accredited factory)	Nylon	Hangs on cord	530mm x 210mm x 100mm 21" x 8" x 4" 0.011m³ / 0.393ft³ 1.3kg / 2.87lb
Width: 500mm / 20" Height: 1400mm / 55" Weight: 3.8kg / 8.37lb	5m / 16.4ft	Bamboo plywood (Sourced from FSC accredited factory)	Nylon	3 x Suspension Wires	790mm x 270mm x 200mm 31" x 11" x 8" 0.043m³ / 1.5ft³ 4.5kg / 9.9lb

*Black comes with black cordset and fasteners. All others come with white cordset and clear fasteners. Custom lengths available on request.

You will need

Fixings for cone gripper (fixing screws NOT SUPPLIED).

Note: Choose appropriate hardware to attach base plate (Fig.1) to ceiling substrate.

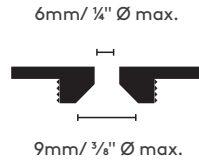
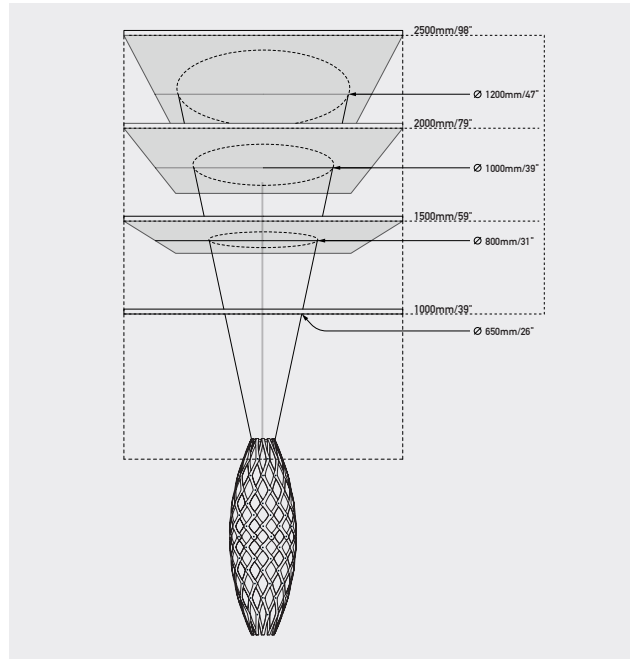


Fig 1. Base Plate

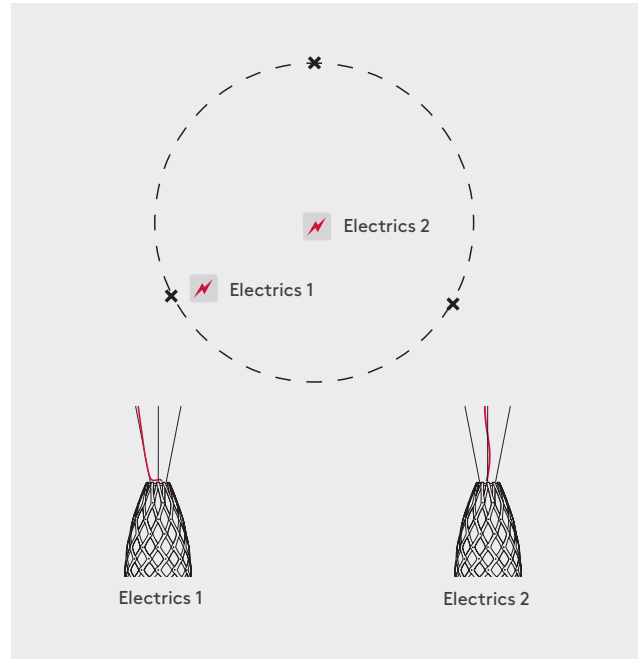
Installation 1400mm/55"



Step 1.

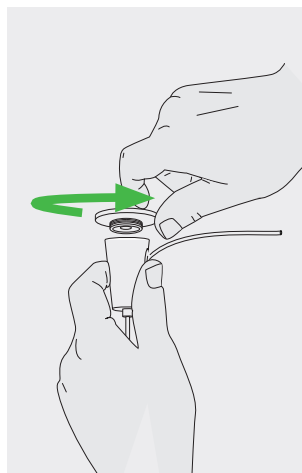
Decide upon hanging distance. Use the schematic diagram as a guide to pick a circle radius to be marked out on ceiling. This circle can be marked with a length of timber or string.

Options



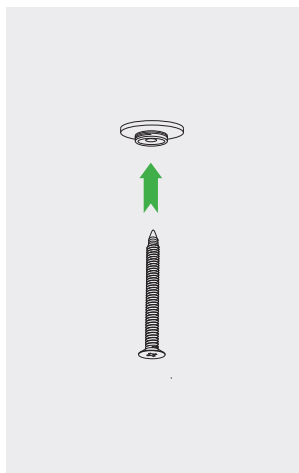
Step 2.

Mark 3 hanging points where your cone grippers will be located. You can either centrally locate the ceiling canopy or run the electric cord up one of the suspension wires.



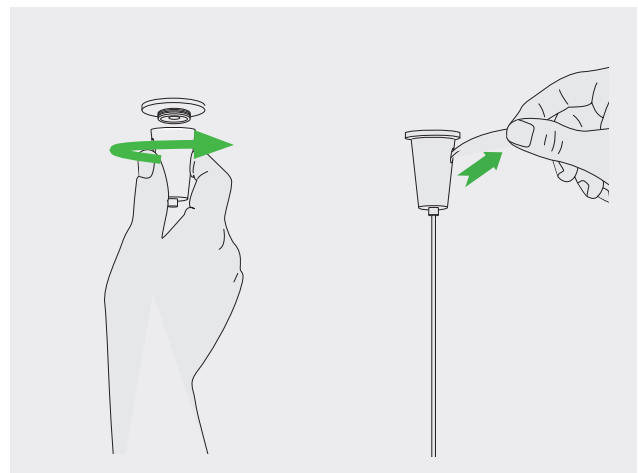
Step 1.

Unscrew baseplate.



Step 2.

Use appropriate fixing screw to mount base plate (Fig.1).

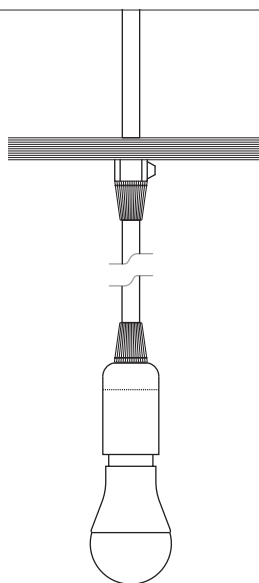


Step 3.

Remove cable from cone. Screw cone back onto baseplate. Re-insert cable and level light. Once desired position is set, trim excess cable.

Technical Drawing

500mm/20"



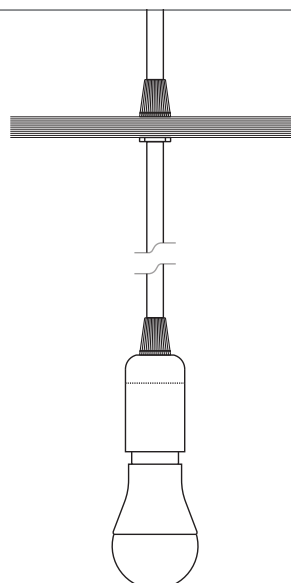
North America: E26, Max 60 Watts

120v AC 60hz

Rest of World: E14, Max 60 Watts

230-240v AC 50hz

900mm/35"



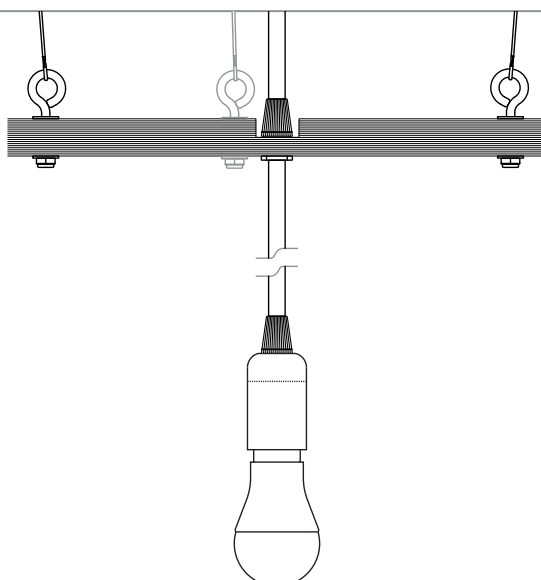
North America: E26, Max 60 Watts

120v AC 60hz

Rest of World: E27, Max 60 Watts

230-240v AC 50hz

1400mm/55"

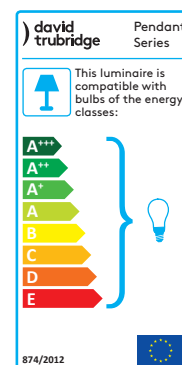


North America: E26, Max 60 Watts

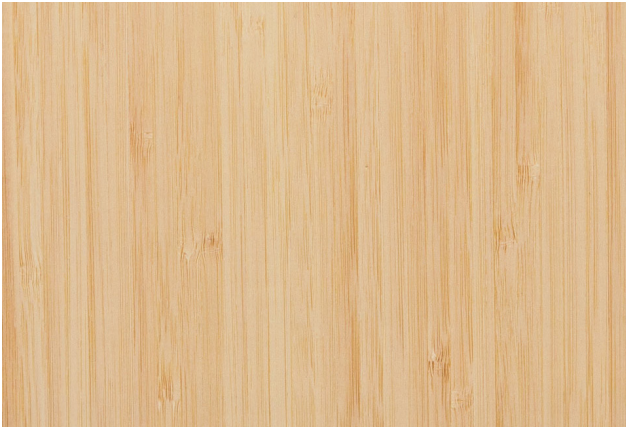
120v AC 60hz

Rest of World: E27, Max 60 Watts

230-240v AC 50hz

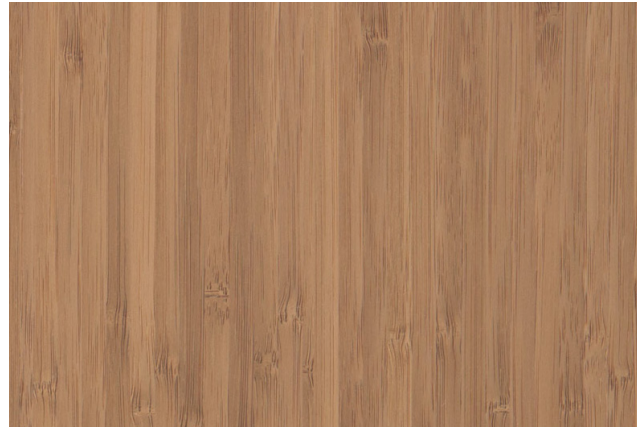


Finish Choices



Natural

All bamboo (our primary material) is secondary product, from renewable forests in China grown as a food source. We have visited these plantations and are satisfied with the quality of their systems.



Caramel

Caramel bamboo starts out as natural and is carbonised using steam to caramelise the natural sugars which darken the bamboo. This process creates a different look without using chemicals.



Painted Lights

We use an acrylic low VOC (volatile organic compound) paint that is made in New Zealand. Colour swatches are available in all retailers. See the Resene website for more info.
www.resene.co.nz



Natural



Caramel



Aqua



Lime



Red



Orange



Yellow



White 1 Side



White 2 Sides



Black 1 Side (Outside)



Black 1 Side (Inside)



Black 2 Sides



Contact

New Zealand
Showroom/Head office

Contact

+64 6 6500 204
info@davidtrubridge.com

Address

Corner Station Road &
Groome Place, Whakatu,
Hastings, Hawkes Bay,
New Zealand

+61 7 3254 4122
sales@lumen-8.com.au
lumen-8.com.au

38 Arthur Street
Fortitude Valley Q 4006

 @lumen8architecturallighting
 @lumen8architecturallighting
 @lumen8-architectural-lighting

lumen⁸
Architectural Lighting